

Regional Sustainability Dashboard

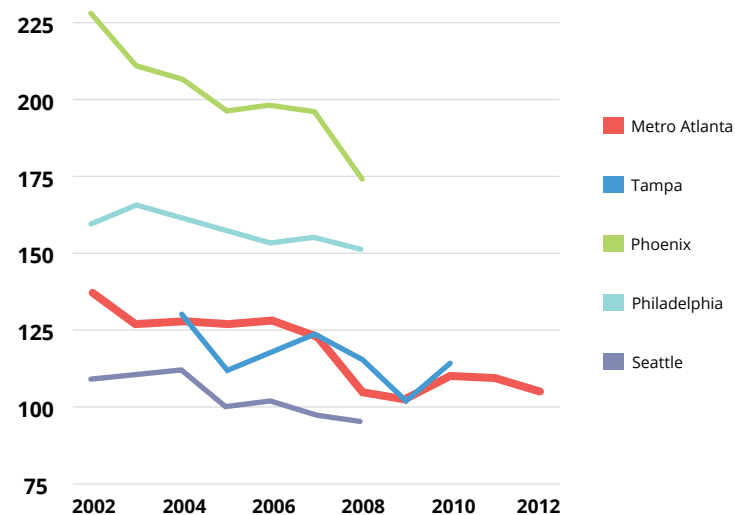
*Tracking progress to
a sustainable future.*





Water

Water Usage in Metro Atlanta
(gallons / day / person)



Metro Atlanta is a leader in water conservation & stewardship.

Metro Atlanta has one of the most aggressive water conservation programs in the country.

Per capita water consumption in the metro Atlanta region dropped more than 20 percent between 2000 and 2010, despite an increase in population.

Regional planning efforts through the Metropolitan North Georgia Water Planning District continue to move the region in the right direction. While conservation remains important, we also need to focus on investing in new and existing water infrastructure.



Air

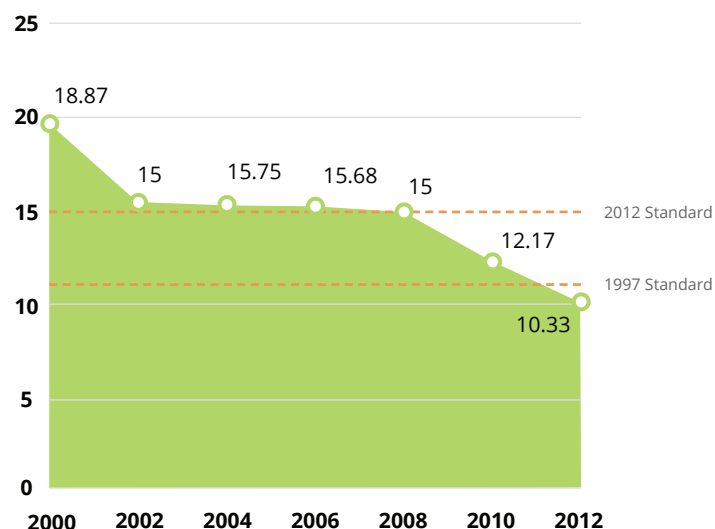
Air quality in the metro Atlanta region has improved in the last decade.

Metro Atlanta is one of the largest markets for zero emission vehicles in the country.

The average annual ambient air quality in metro Atlanta is better than the 2012 Federal Standard for particulate matter (PM 2.5). In December last year, the U.S. Environmental Protection Agency approved redesignation of the Atlanta area to attainment for the 8-hour ozone standard.

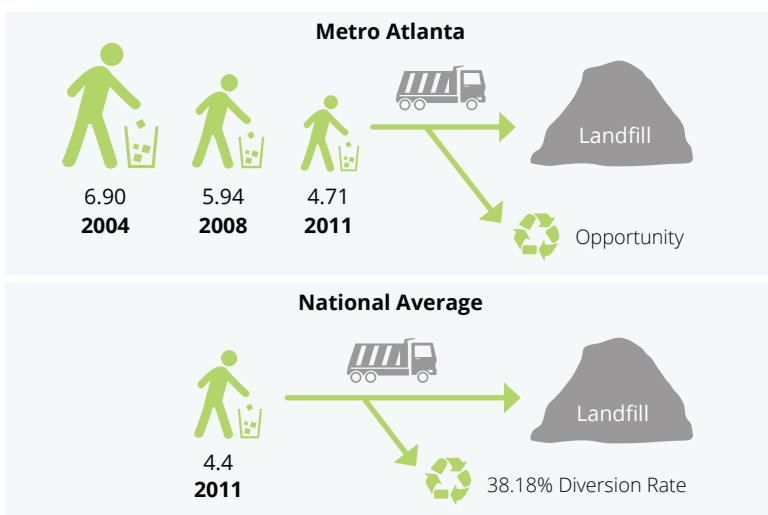
More efficient vehicles, increased commute alternatives, and alternative and efficient sources of power generation continue to improve air quality in the region.

Annual Air Quality
(particulate matter 2.5 µg / m³)



Waste

Waste Generation Per Capita (lbs. per day)



Waste generation in the region is trending down.

Georgia has the second largest infrastructure for material recycling in the nation with the majority of the infrastructure located in metro Atlanta. Waste diversion and recycling generate a number of environmental, financial and social benefits.

While the per capita waste sent to landfill is trending down, the metro region lags behind the national average. Currently, waste recycling and material diversion data is not available for the region to identify policy and programs necessary to improve our progress.

We need both incentives and policy drivers for widespread adoption of recycling and waste diversion practices in the region.



Transportation

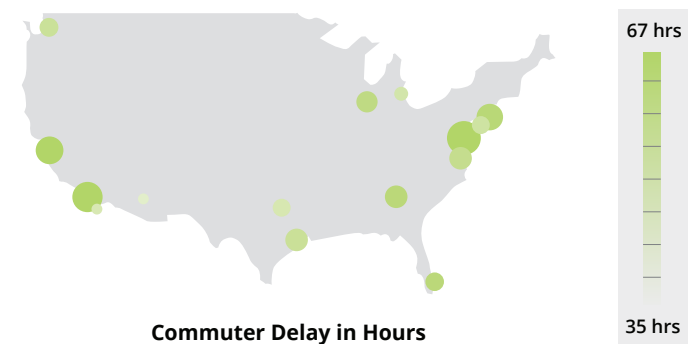
Metro Atlanta's traffic is comparable to its peer regions.

The region's first major public-private partnership project is currently underway to expand the managed lanes program an additional 63 miles. The Atlanta Streetcar Project will begin operations later this summer. Projects like these are moving the region in the right direction.

According to the 2013 INRIX traffic scorecard, 20 other metro areas reportedly have higher traffic congestion and commuter delays than metro Atlanta.

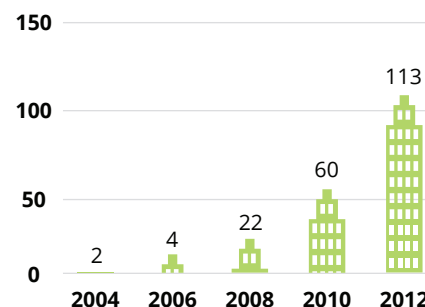
Addressing transportation issues on a regional level remains a top priority for our region. Policies promoting regional commute alternatives, better connectivity of public transportation systems and more efficient land-use patterns are important to address commuter mobility.

Metro Region Yearly Delay per Auto Commuter (2012)



Built Environment

Growth of LEED & EnergyStar Certified Building Space in Metro Atlanta
(in millions of sq. ft., cumulative)



LEED, EnergyStar & EarthCraft certified buildings drive energy efficiency in the built environment.

Philips Arena, which received LEED certification in 2009, was the first NBA arena to achieve such certification. With the Georgia World Congress Center's expected LEED certification later this year, the addition of the new Falcons stadium and the College Football Hall of Fame, downtown Atlanta will have one of the densest areas of LEED certified event space in the world at nearly 6.5 million square feet.

The City of Atlanta has the second highest per capita LEED certified space in the nation. Even through the recession, certified LEED space has continued to rise.

The Southface Energy Institute's EarthCraft green building certification program and Georgia Power's EarthCenters program are examples of programs promoting energy efficiency in the region. Adoption of Property Assessed Clean Energy (PACE) programs to finance energy efficiency and renewable energy upgrades can help drive energy efficiency in existing non-certified spaces.



Tree Canopy & Urban Heat Island Effects

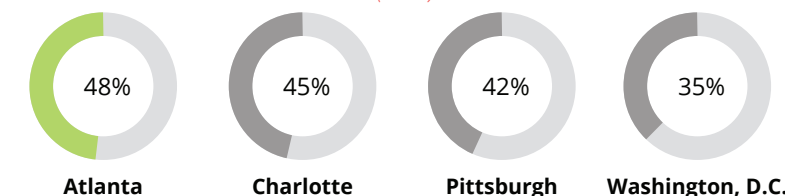
Urban tree canopy is a visible beacon for the region.

Metro Atlanta has the highest urban tree canopy profile in the country for any large metro area. It provides not only better air quality, but also noise reduction, habitat and shade.

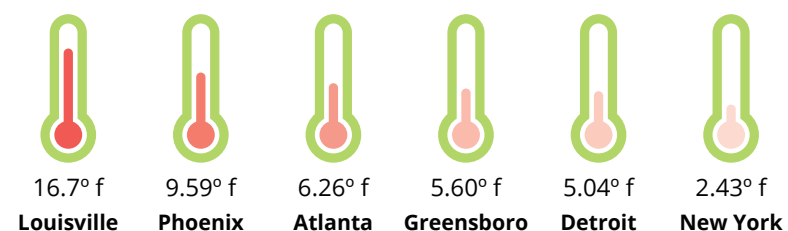
While metro Atlanta has the highest urban tree canopy, it also suffers from urban heat island effects like most major metropolitan areas.

Urban tree canopy is considered one of the most effective tools in combating urban warming. We need to protect our tree canopy and focus on other measures such as green roofs, reflective roofs and cool pavements.

Percent Urban Tree Canopy (2012)



Urban Warming in Excess of Rural Trend (in the last century)





Why this Dashboard?

Enhancing sustainability is at the core of improving quality of life and the business climate in our region. Benchmarking the metro Atlanta region on key sustainability indicators will help us track our progress in this direction. The Regional Sustainability Dashboard can also be an important tool to identify growth opportunities in the clean technology sector. We plan to update the dashboard publication annually and provide more frequent updates online.

Initial Findings

Initial benchmarking efforts show progress on all key indicators during the last decade. While the region is excelling in some areas, it also revealed areas needing additional attention. Using these findings as a backdrop, the Metro Atlanta Chamber will engage the region's leaders, including policy makers, local governments, community partners, academia and businesses in conversations to improve on these and other key sustainability indicators.

Get engaged in the environmental policy and sustainability discussions at the Metro Atlanta Chamber and help shape the future of our region.

The Metro Atlanta Chamber's members include environmental innovators from multi-national corporations to startups. Many of these members are also leading the way on sustainable practices and in protecting our natural resources.

Get more information at MetroAtlantaChamber.com/Sustainability



235 Andrew Young International Blvd., NW
Atlanta, Georgia 30303
404.880.9000

MetroAtlantaChamber.com



Development of this dashboard was a collaborative effort. We used publicly available data and consulted many organizations who contributed to this report.

Partners & Data Sources

American Water Works Association
Atlanta Regional Commission
City of Atlanta, Office of Sustainability
Clean Air Campaign
Equinox Center
Georgia Institute of Technology
Center for GIS, Urban Climate Laboratory
Georgia Department of Community Affairs
Georgia Environmental Protection Division
Georgia Power
Georgia Recycling Coalition
INRIX Technology, Inc.
Metro North Georgia Water Planning District
Southface Energy Institute
Sustainable Atlanta
Park Pride
University of Georgia, Natural Resources Spatial Analysis Lab
Texas A&M University, Transportation Institute
U.S. Environmental Protection Agency
U.S. Green Building Council