

The background of the slide features a close-up, artistic view of water ripples. The water is a vibrant blue, with lighter, almost white highlights where the ripples catch the light, creating a sense of movement and depth. The ripples are concentric and spread across the entire frame.

# **Water Contingency Planning Task Force**

# The Water Crisis

## Metro Atlanta will face water supply shortages in 2012

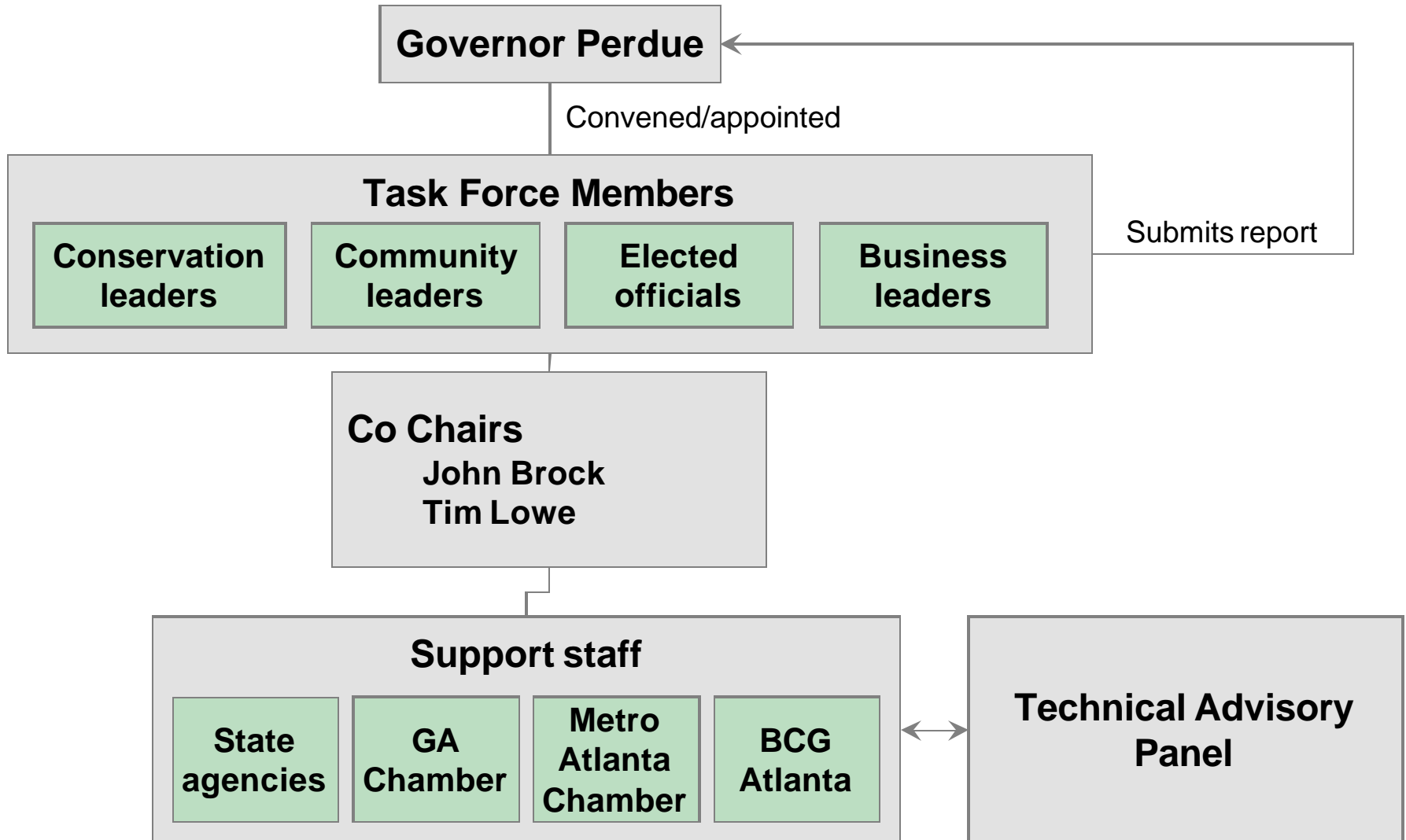
- In July 2009, a federal judge ruled that Lake Lanier was not constructed for water supply. We have less than three years for Congress to reauthorize Lake Lanier to include water supply.
- Absent Congressional action, water supply levels will be drastically reduced to 1975 levels.
- In 2012, the potential water shortfall is 34% for Metro Atlanta. In 15 years, we could face a gap of 44% based on the judge's ruling.
- Many communities face more severe shortfalls. For example, Gwinnett County would have no access to its sole source of water.

# Georgia's Response to Ruling

## Governor pursues multi-prong strategy

- **Multi-prong Strategy:**
  - Appeal the decision
  - Negotiate with Alabama and Florida
  - Congressional Reauthorization, as directed by Judge
  - Contingency Planning to address gap in supply
- **Water Contingency Planning Task Force** convened by Governor to address gap. Recommendations due by mid-December.
  - Directed members to analyze crisis as if it were a threat to their business
  - Develop a fact-base to educate leaders on Georgia's water situation and the implications of judge's ruling
  - Define a time-driven action plan prioritizing specific options for conservation, supply enhancement, and water policy

# Task Force Structure

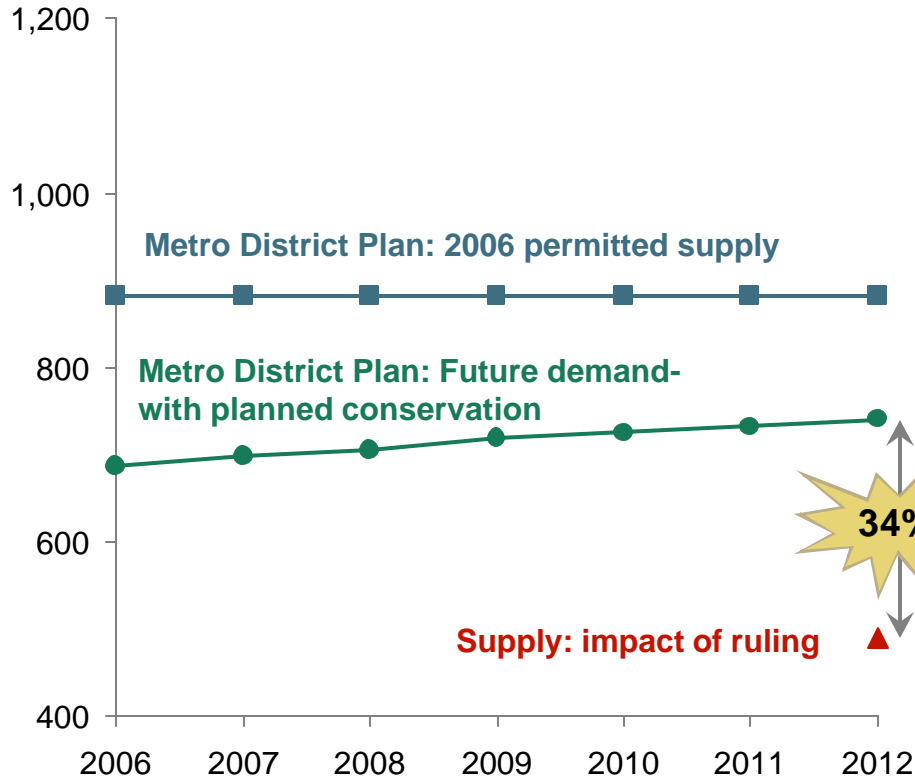


# Closing the Gap

## Conserve, Capture & Control are strategies to address shortfall

**250 MGD (34%) gap between supply and demand by 2012**

Supply/Demand (AAD - MGD)



**1 Conserve**

- Reduce water demand

**2 Capture**

- ID new sources and expand existing sources, including reservoirs, etc.

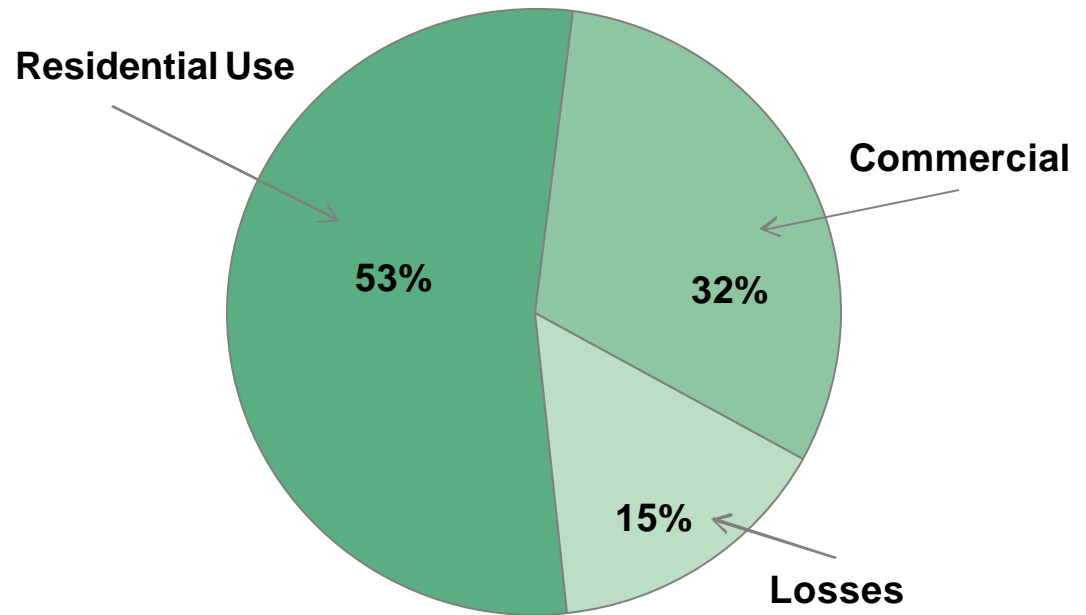
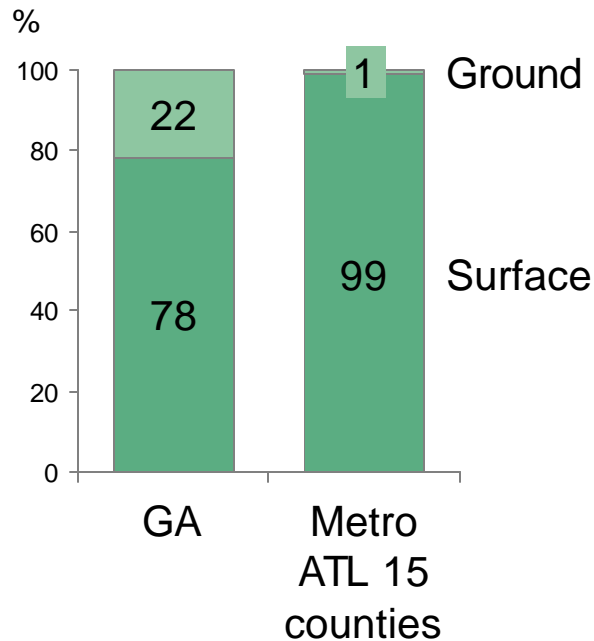
**3 Control**

- Change policies and procedures to optimize how water is managed

# How do we get and use water?

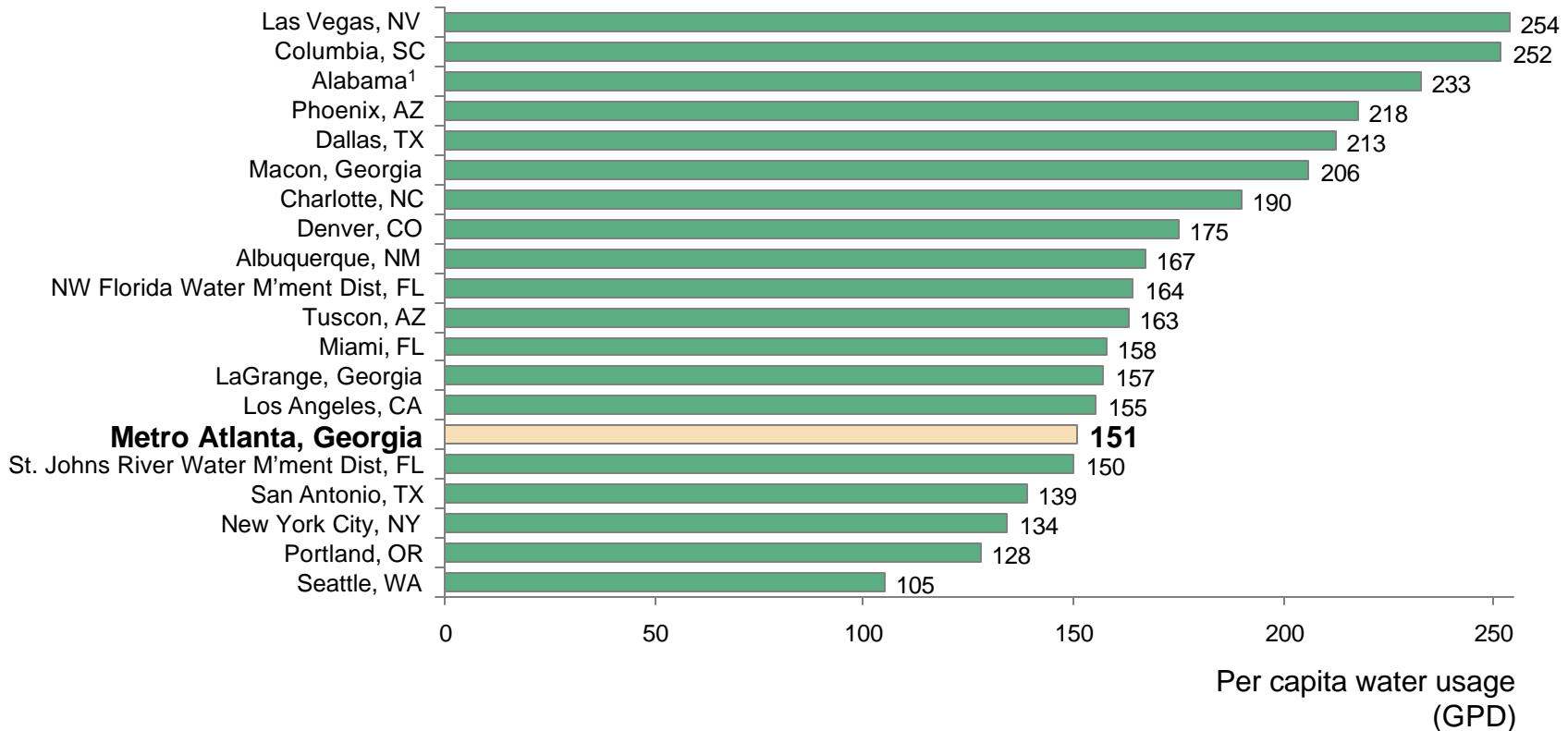
## More than half of all water is used in homes in Metro Atlanta

**Metro Atlanta is much more dependent on surface water than other parts of Georgia**



# Metro Atlanta uses less water per person than many metro cities

gallons per capita per day



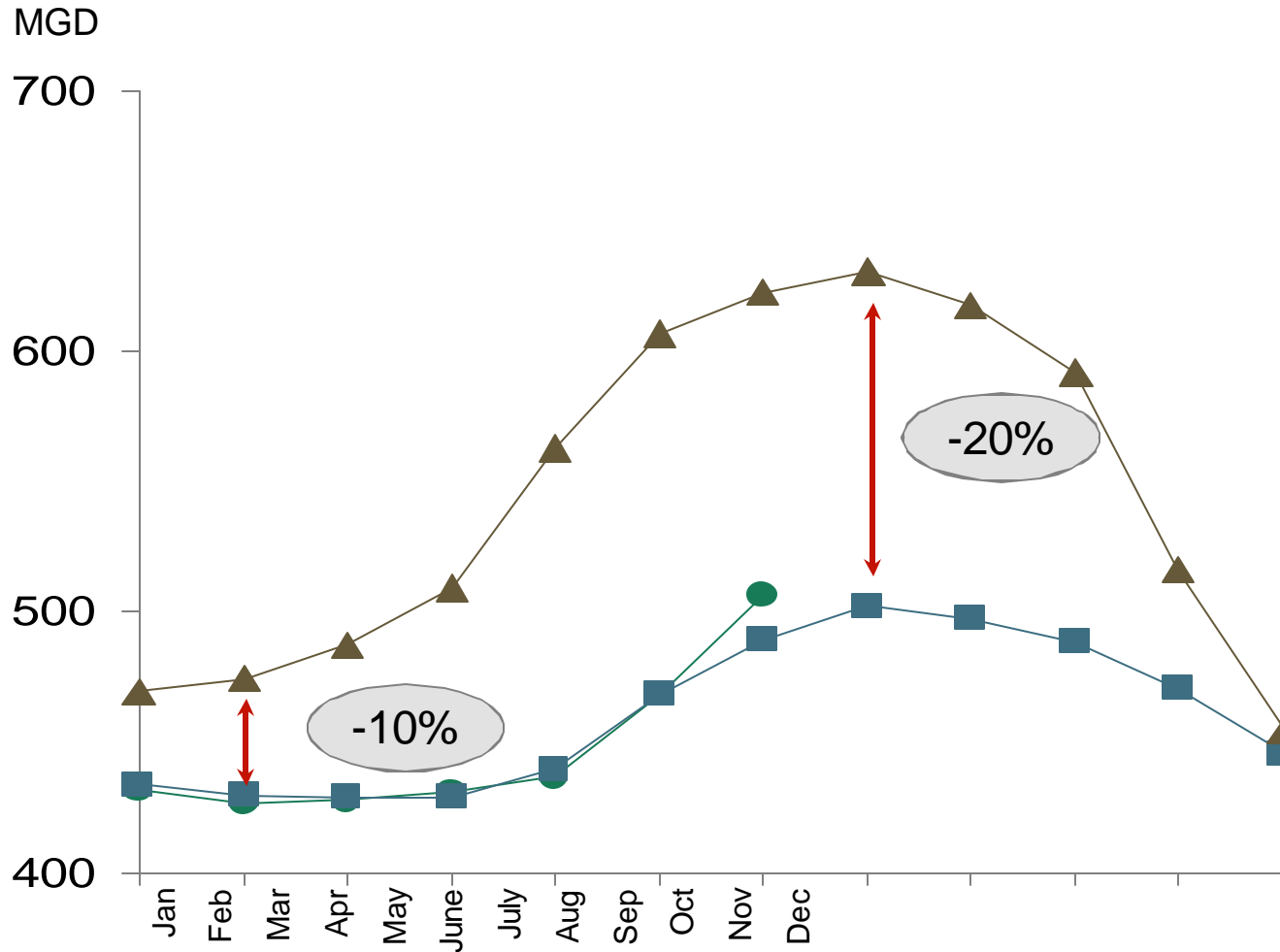
1. State average; data not available for individual cities in AL

Note: Overall per capita is calculated by dividing total gallons of water produced by water provider by the population served

Source: Georgia EPD analysis

# We have a strong conservation record

## Metro Atlanta has reduced water use by 20 percent



# Summary

**We face a very serious supply shortfall, which threatens the economic well being of Metro Atlanta, Georgia and the entire Southeast...**

**We've made significant progress in reducing water usage- though there's still further to go**

- GA usage actually lower than other nearby areas
- Metro ATL usage levels actually below rest of state, other comparable areas

**This Task Force is charged to evaluate potential options and prioritize solutions to address the gap**

- Conservation
- Capture
- Control